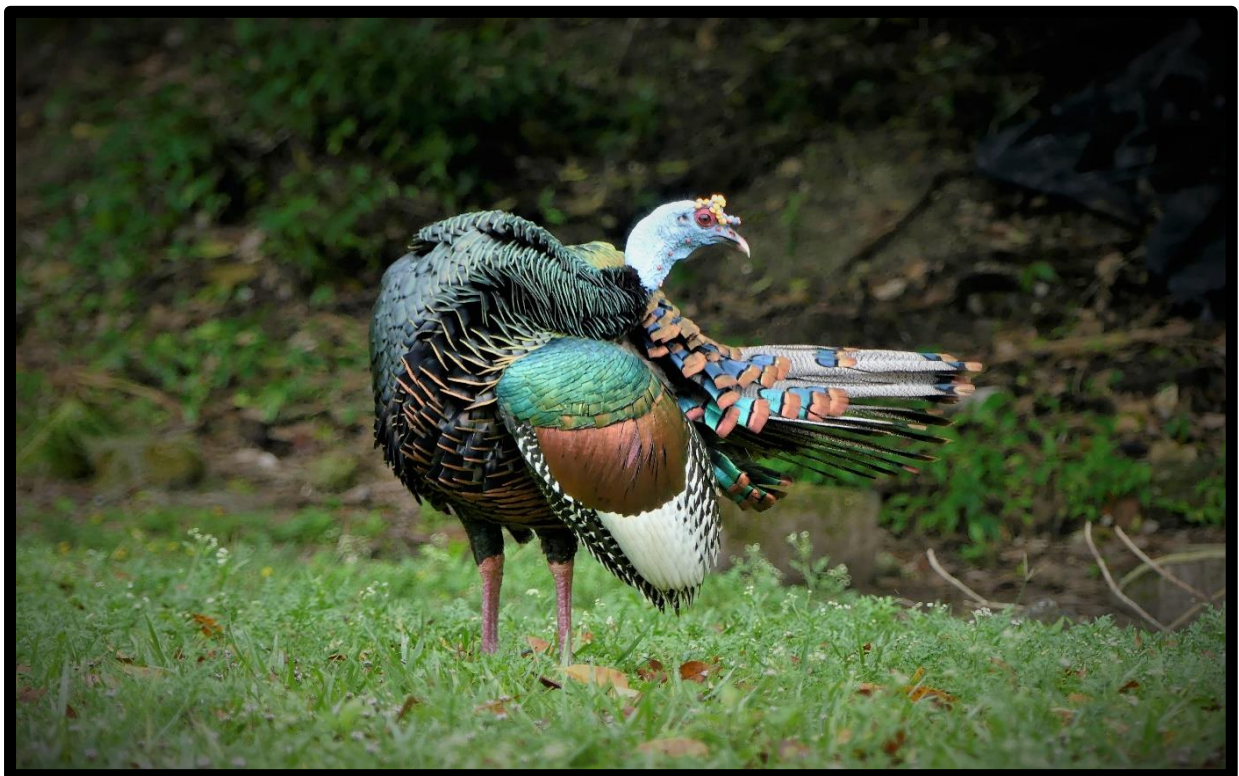




GUATEMALA: TIKAL AND MAYAN RAINFOREST HIGHLIGHTS

SPECIFIC INFORMATION

[PLEASE CLICK HERE FOR GENERAL INFORMATION PERTAINING TO OUR  
GUATEMALA TOURS](#)



*Ocellated Turkey, one of the highlights of the Guatemalan lowlands.*

## ARRIVAL INFORMATION

Please e-mail us at [info@birdingecotours.com](mailto:info@birdingecotours.com) (or [contact us](#) a different way if preferred) before you book any flights, as this information is only a guide and subject to change. Our tour will start in Guatemala City, capital of Guatemala. You can reach La Aurora international airport (GUA) with flights from certain international airports like Miami, Atlanta and Houston (USA) Mexico City (Mexico), Panama City (Panama) and Madrid (Spain). You may want to consult a travel agent for assistance with booking the most convenient flight. (You are also welcome to contact us if you would like some guidance). Most international flights arrive in Guatemala City late in the evening. You will be met at the airport and transferred to your hotel - please look for someone holding a sign with your name or with the Birding Ecotours logo. In cases where you arrive on an early flight (in the morning), we will meet and transfer you to your hotel but you will then have to wait until the hotel's check-in time starts. You might be able to check-in early and you may be charged extra by the hotel – this additional cost would be for your own account (i.e. excluded from the Birding Ecotours tour price.)

Please remember to keep your luggage tags, as they are required to exit the terminal at the Guatemala airport. When filling out the customs declaration form, use this address for the hotel: Hotel Barcelo, 7A Avenida 15-45 Guatemala City 01009, Guatemala.

## DEPARTURE INFORMATION

After 8 days and 7 nights, our tour will end in Guatemala City after flying from Petén to La Aurora International Airport, where we will say farewell. Should you prefer to stay an additional night in Guatemala City to have enough time to connect with your international flight, we can easily book an additional night in Guatemala City for you.

## DOMESTIC FLIGHT INFORMATION

There are two domestic flights on this trip – from Guatemala City to Petén and from Petén back to Guatemala City. These flights are not included in the Birding Ecotours tour price, but we will book them for you. Your flight details will be sent to you about two months before the tour starts and provided we have received full payment for the tour. There is a limited weight for check-in and carry-on luggage aboard included in the ticket price and extra weight will be charged separately by the airline.

## PHYSICAL REQUIREMENTS AND PACE

We classify this trip as moderate. Most of the birding consists of walking along roads, humid forest trails (some of them are slightly up and down) and full mornings walking around the Tikal archaeological site which includes walking up and down pyramids steps. We will spend time sitting and enjoying hummingbird feeders and watching for birds around the lodges' clearings. There are also pleasant boat trips. Keep in mind that – as is usual on birding trips –

we will need to be awake very early in the mornings and thus pre-dawn starts are the order of the day. We usually spend the whole morning birding in the field, then return to the lodge for lunch and a little rest and then more birding in the afternoon. Your guide will sometimes invite you to look for owls at night, but this is an optional activity that you can skip if you feel tired. Some people prefer to rest, skipping birding in the afternoon; this can be done at those lodges where we are staying more than one night. When we do birding stops while traveling from location to location, participants who feel tired are welcome to remain in the vehicle. We spend two or three nights at a few places during this tour, giving you the opportunity to walk around calmly and not worry about packing and unpacking every day. This trip may be difficult for people with back, walking, and/or balance problems or for those who are not used to the early starts involved in birding trips.

### **ATM MACHINES**

ATM machines are available in La Aurora (Gautemala City) and Las Flores (Petén) airports only.

### **WEATHER**

The weather on this trip will be hot and humid in Tikal and Las Guacamayas Biological Station but we may experience some windy days and slightly cool temperatures at night.

### **LAUNDRY**

Laundry facilities are limited on this trip. The Guacamayas Biological Station staff can do laundry for you, but they do not have a tumble drier and so there is a risk that laundry may not get dry. Jungle Lodge is located within the woods of the Tikal National Park about 40 kilometers from Flores. Electricity is limited and the lodge mainly uses generators, so they normally send the laundry to town. The express laundry delivery service is limited and dependent on availability.

### **ACCOMMODATION**

We rank the accommodation on this tour as very good. Jungle Lodge offers nice rooms with fan (usable 24 hours a day) and private bathroom. The Guacamayas Station is more rustic but with air-conditioned rooms and amazing views. Both lodges turn off their electricity generators late in the evening but there is enough time for everyone to charge their electrical devices.

## TRANSPORT

We will have a private van for the whole tour with plenty of room for everybody when we have more than 4 participants. However, we will have to divide the group for the transfer from Flores to Las Guacamayas Biological Station and back. The roads on the stretch from Flores to the San Pedro River are too rough for the regular large tourist vans, so we will use 4×4 vehicles instead. Normally, for a group of four people we use two 4×4 vehicles.

## MISCELLANEOUS

Due to the lack of electricity 24 hours a day at Jungle Lodge, participants who need an air breathing nasal mask for apnea therapy might have trouble if their device is not rechargeable. At Las Guacamayas Biological Station it is possible to pay a fee (usually about US\$15 per hour) to get additional hours of electricity but this will also depend on the availability of fuel for the station generator.

The use of playback to attract birds is not allowed in Tikal National Park.

There is no transport from Jungle Lodge to any of the birding and archaeological sites within Tikal National Park. Be prepare for long daily walks.

Admission fees to Tikal National Park are booked in advance and allow a day visit only.

We are not allowed to wander around on our own within the park – we must always be escorted by an authorized Tikal local guide.

We are not allowed to explore outside the demarcated areas in the park.

Even when not visiting Guatemala during the rainy season, we can get sporadic rain showers in the tropical rainforest lowlands.

Bugs are present on the tour but should not be a major problem. We advise bringing insect repellent.

